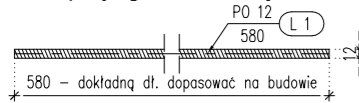
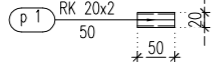


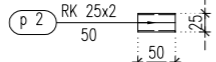
L 1 - pręt gwintowany Ø12



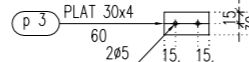
Profil p 1



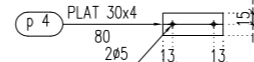
Profil p 2



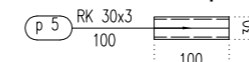
Profil p 3



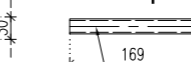
Profil p 4



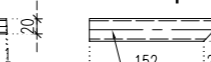
Profil p 5



Profil p 6



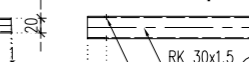
Profil p 7



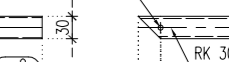
Profil p 8



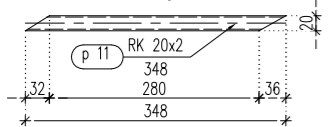
Profil p 9



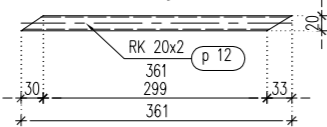
Profil p 10



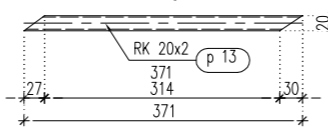
Profil p 11



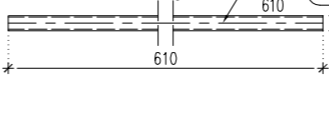
Profil p 12



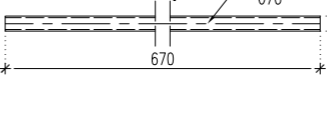
Profil p 13



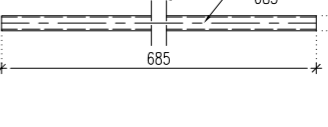
Profil p 14



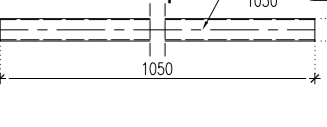
Profil p 15



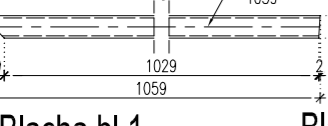
Profil p 16



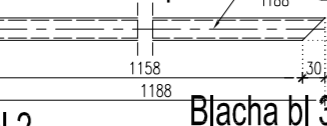
Profil p 17



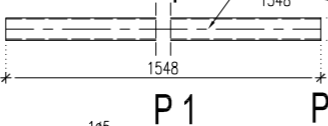
Profil p 18



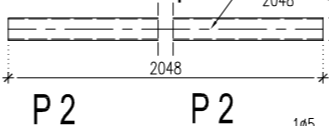
Profil p 19



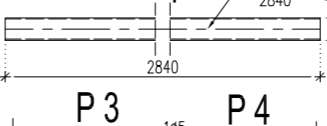
Profil p 20



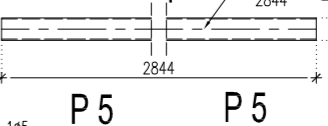
Profil p 21



Profil p 22



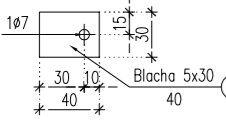
Profil p 23



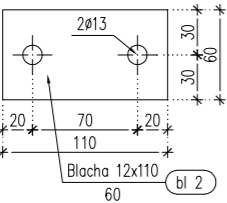
Profil p 24



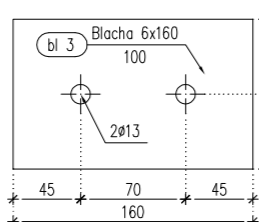
Blacha bl 1



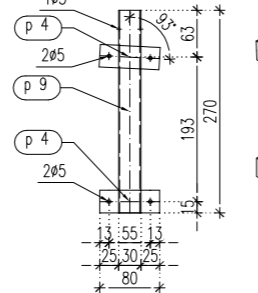
Blacha bl 2



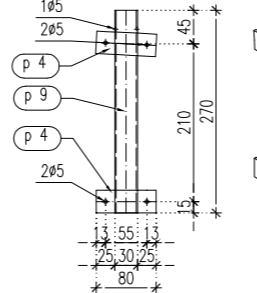
Blacha bl 3



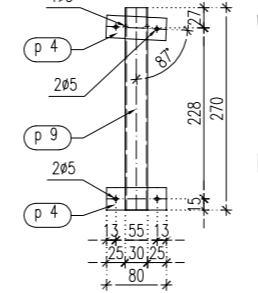
P 1



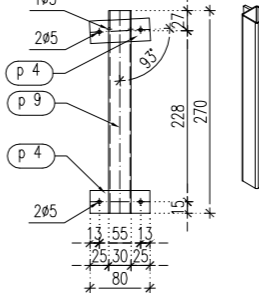
P 2



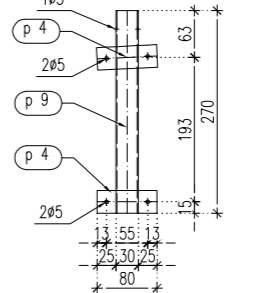
P 3



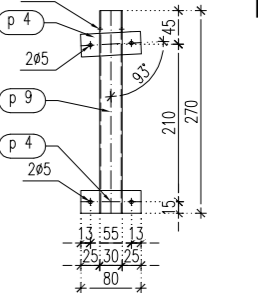
P 4



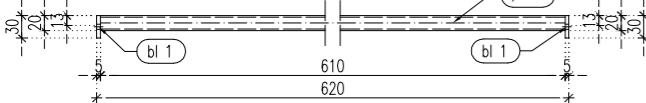
P 5



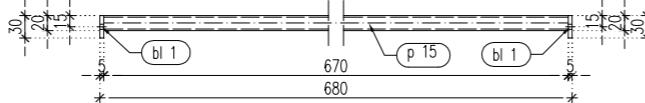
P 6



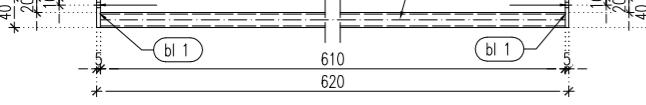
P 7 szt. 3



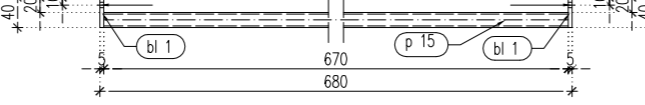
P 8 szt. 12



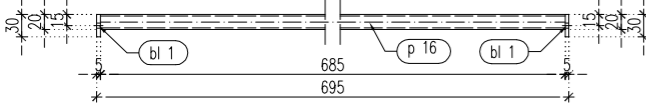
P 7



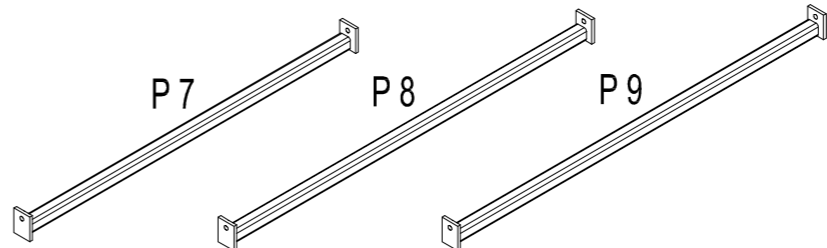
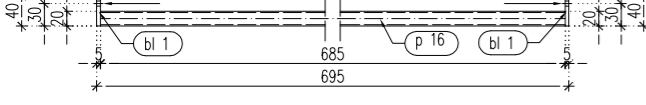
P 8



P 9 szt. 2



P 9



Zestawienie stali - profile, blachy

Lista montażowa - elementy P7-P9

| Pozycja | Przekrój | Gatunek | Liczba | Długość (mm) | Masa | | |
|--|-------------|---------|--------|--------------|--------------------|---------------|----------------|
| | | | | | Jednostkowa (kg/m) | Elementu (kg) | Całkowita (kg) |
| Pozycja P 7 Liczba=3 Masa Elementu=0,73(kg) | | | | | | | |
| bl 1 | BLACHA 5x30 | S 235 | 2 | 40 | 0,05 | 0,09 | |
| p 14 | RK 20x2 | S 235 | 1 | 610 | 1,0500 | 0,64 | 0,73 |
| Pozycja P 8 Liczba=12 Masa Elementu=0,79(kg) | | | | | | | |
| bl 1 | BLACHA 5x30 | S 235 | 2 | 40 | 0,05 | 0,09 | |
| p 15 | RK 20x2 | S 235 | 1 | 670 | 1,0500 | 0,70 | 0,79 |
| Pozycja P 9 Liczba=2 Masa Elementu=0,81(kg) | | | | | | | |
| bl 1 | BLACHA 5x30 | S 235 | 2 | 40 | 0,05 | 0,09 | |
| p 16 | RK 20x2 | S 235 | 1 | 685 | 1,0500 | 0,72 | 0,81 |
| Masa łączna elementów (kg) | | | | | | | 13,35 |
| Dodatek na spoiny : 2.0 % (kg) | | | | | | | 0,27 |
| Masa całkowita (kg) | | | | | | | 13,62 |

Lista montażowa - elementy P1-P6

| Pozycja | Przekrój | Gatunek | Liczba | Długość (mm) | Masa | | |
|---|-----------|---------|--------|--------------|--------------------|---------------|----------------|
| | | | | | Jednostkowa (kg/m) | Elementu (kg) | Całkowita (kg) |
| Pozycja P 1 Liczba=3 Masa Elementu=0,50(kg) | | | | | | | |
| p 4 | PLAT 30x4 | S 235 | 2 | 80 | 0,9420 | 0,08 | 0,15 |
| p 9 | RK 30x1.5 | S 235 | 1 | 270 | 1,3000 | 0,35 | 0,50 |
| Pozycja P 2 Liczba=3 Masa Elementu=0,50(kg) | | | | | | | |
| p 4 | PLAT 30x4 | S 235 | 2 | 80 | 0,9420 | 0,08 | 0,15 |
| p 9 | RK 30x1.5 | S 235 | 1 | 270 | 1,3000 | 0,35 | 0,50 |
| Pozycja P 3 Liczba=3 Masa Elementu=0,50(kg) | | | | | | | |
| p 4 | PLAT 30x4 | S 235 | 2 | 80 | 0,9420 | 0,08 | 0,15 |
| p 9 | RK 30x1.5 | S 235 | 1 | 270 | 1,3000 | 0,35 | 0,50 |
| Pozycja P 4 Liczba=3 Masa Elementu=0,50(kg) | | | | | | | |
| p 4 | PLAT 30x4 | S 235 | 2 | 80 | 0,9420 | 0,08 | 0,15 |
| p 9 | RK 30x1.5 | S 235 | 1 | 270 | 1,3000 | 0,35 | 0,50 |
| Pozycja P 5 Liczba=3 Masa Elementu=0,50(kg) | | | | | | | |
| p 4 | PLAT 30x4 | S 235 | 2 | 80 | 0,9420 | 0,08 | 0,15 |
| p 9 | RK 30x1.5 | S 235 | 1 | 270 | 1,3000 | 0,35 | 0,50 |
| Masa łączna elementów (kg) | | | | | | | 9,04 |
| Dodatek na spoiny : 2.0 % (kg) | | | | | | | 0,18 |
| Masa całkowita (kg) | | | | | | | 9,22 |

| Pozycja | Przekrój | Materiał | Liczba | Długość (mm) | Masa | | |
|--------------------------------|---------------|----------|--------|--------------|--------------------|---------------|----------------|
| | | | | | Jednostkowa (kg/m) | Elementu (kg) | Całkowita (kg) |
| L 1 | PO 12 | S 235 | 40 | 580 | 0,8880 | 0,52 | 20,60 |
| bl 1 | BLACHA 5x30 | S 235 | 34 | 40 | | 0,05 | 1,55 |
| bl 2 | BLACHA 12x110 | S 235 | 40 | 60 | | 0,60 | 23,90 |
| bl 3 | BLACHA 6x160 | S 235 | 20 | 100 | | 0,74 | 14,83 |
| p 1 | RK 20x2 | S 235 | 20 | 50 | 1,0500 | 0,05 | 1,05 |
| p 2 | RK 25x2 | S 235 | 18 | 50 | 1,3600 | 0,07 | 1,22 |
| p 3 | PLAT 30x4 | S 235 | 8 | 60 | 0,9420 | 0,06 | 0,45 |
| p 4 | PLAT 30x4 | S 235 | 36 | 80 | 0,9420 | 0,08 | 2,71 |
| p 5 | RK 30x3 | S 235 | 20 | 100 | 2,3600 | 0,24 | 4,72 |
| p 6 | RK 20x2 | S 235 | 20 | 170 | 1,0500 | 0,18 | 3,57 |
| p 7 | RK 30x3 | S 235 | 20 | 181 | 2,3600 | 0,43 | 8,54 |
| p 8 | RK 20x2 | S 235 | 20 | 188 | 1,0500 | 0,20 | 3,94 |
| p 9 | RK 30x1.5 | S 235 | 18 | 270 | 1,3000 | 0,35 | 6,32 |
| p 10 | RK 30x3 | S 235 | 20 | 270 | 2,3600 | 0,64 | 12,76 |
| p 11 | RK 20x2 | S 235 | 20 | 348 | 1,0500 | 0,36 | 7,30 |
| p 12 | RK 20x2 | S 235 | 20 | 361 | 1,0500 | 0,38 | 7,59 |
| p 13 | RK 20x2 | S 235 | 20 | 371 | 1,0500 | 0,39 | 7,80 |
| p 14 | RK 20x2 | S 235 | 3 | 610 | 1,0500 | 0,64 | 1,92 |
| p 15 | RK 20x2 | S 235 | 12 | 670 | 1,0500 | 0,70 | 8,44 |
| p 16 | RK 20x2 | S 235 | 2 | 685 | 1,0500 | 0,72 | 1,44 |
| p 17 | RK 30x1.5 | S 235 | 6 | 1050 | 1,3000 | 1,36 | 8,19 |
| p 18 | RK 30x3 | S 235 | 20 | 1059 | 2,3600 | 2,50 | 50,00 |
| p 19 | RK 30x3 | S 235 | 20 | 1188 | 2,3600 | 2,80 | 56,07 |
| p 20 | RK 30x1.5 | S 235 | 1 | 1548 | 1,3000 | 2,01 | 2,01 |
| p 21 | RK 30x1.5 | S 235 | 1 | 2048 | 1,3000 | 2,66 | 2,66 |
| p 22 | RK 30x1.5 | S 235 | 1 | 2840 | 1,3000 | 3,69 | 3,69 |
| p 23 | RK 30x1.5 | S 235 | 1 | 2844 | 1,3000 | 3,70 | 3,70 |
| p 24 | RK 30x1.5 | S 235 | 1 | 2934 | 1,3000 | 3,81 | 3,81 |
| Masa łączna elementów (kg) | | | | | | | 270,80 |
| Dodatek na spoiny : 2.0 % (kg) | | | | | | | 5,42 |
| Masa całkowita (kg) | | | | | | | 276,22 |

jednostka projektowa:



MODERO ARCHITEKCI s.c. ul. Karolinki 58/202, 44-100 Gliwice tel. 32 230 13 18, www.modero.com.pl

inwestor:

Urząd Miejski i Gminy w Sośnicowicach ul. Rynek 19, 44-153 Sośnicowice

temat opracowania:

Projekt termomodernizacji i modernizacji ogrzewania w budynku OSP w Sierakowicach, przy ul. Wiejskiej 67 na działce nr 365/128

temat rysunku:

Zadaszenia stalowe - elementy cz.1

| | | |
|---|--|---------------------|
| projektant: mgr inż. bud. Paweł Mitas | nr uprawnień: SLK/5396/PWOK/14 | podpis: |
| sprawdzający: tech. bud. Marian Moszczyński | nr uprawnień: 280/91 | podpis: |
| faza projektu: projekt wykonawczy | data: marzec 2015 | skala: 1:5; 1:10 |
| branża konstrukcja | nr licencji ZWCAD: 2APF-5H3L-CSYW 87ZS-UNNS-E5MH | nr rysunku: K-22 |

Opracowanie chronione prawnie Ustawa o Prawie Autorskim i Prawach Pokrewnych z dn. 04.02.1994r. (Dz.U. Nr 24/94 z 23.02.1994r.)