

Pen Tablet



User's Manual

Windows XP/2000/ 98SE

Driver version 4.1X

FCC compliance statement

This equipment has been tested and found to comply with the limits for a Class B digital device, pursuant to Part 15 of FCC Rules. These limits are designed to provide reasonable protection against harmful interference when the equipment is operated in a residential installation. This equipment generates, uses, and can radiate radio frequency energy and if not installed and used in accordance with the instruction manual may cause harmful interference to radio communications. However, there is no guarantee that interference will not occur in a particular installation.

If this equipment causes harmful interference to radio or television reception, which can be determined by turning the equipment off and on, the user is encouraged to try to correct the interference by one or more of the following measures:

- Reorient the receiving antenna.
- Increase the separation between the equipment and receiver.
- Connect the equipment into an outlet on a circuit different from that.
- to which the receiver is connected.

Changes or modifications not expressly approved by the party responsible for compliance can void the user's authority to operate the equipment. This product is equipped with a shielded cable. Extension cable, if used, must be shielded in order to comply with the emission limits. Operation of this device is subject to the following conditions:

(1) This device may not cause harmful interference, and (2) this device must accept any interference received, including interference that may cause undesired operation.

CE compliance statement

This product complies with all the requirements of the EMC Directive 89/336/EEC. This product has been tested and found to comply with:

- IEN55022 (CISPR 22) - Electromagnetic interference.
- IEN50082-1 (IEC801-2, IEC801-3, IEC801-4) - Electromagnetic immunity.
- IEN60950 (IEC60950) - Product safety.

Package contents

After you open the box, please check the package contents carefully. You should have the following items:

- Pen tablet
- Wireless stylus pen
- Wireless mouse (optional)
- USB connector
- Quick start guide
- Driver & PenSuite CD
- Bundled software CDs (optional)

Trademarks

Windows™ is a trademark of Microsoft Corporation. PenSuite™ is a trademark of UC-Logic Technology Corp. All other trademarks used in this manual belong to their respective owners.

1. General Information

1. Overview

Welcome to the world of pen computing! You are about to discover how easy it is to control your personal computer using a wireless stylus pen instead of a mouse. You will be able to write, sign, and annotate documents, and draw, sketch or paint as easily as you would on normal paper, by using the PenSuite™ pen utilities (included), or commercial software packages such as Adobe® PhotoShop™, Corel® Painter™ and Corel® Paint Shop™.

2. Pen Tablet Functions

After installation of the device driver and the PenSuite™ utilities your pen tablet features the following functions:

1. **Direct pointing** – You can move the cursor to any location on the screen by hovering the stylus pen tip over the tablet's surface.
2. **Three-button mouse commands** - Your pen tablet provides all functions of a three- button mouse by means of its pen tip and two programmable barrel buttons.
3. **Pen scrolling** – You can scroll documents and Web pages by moving the pen over the tablet's working area.
4. **Pressure sensitivity** – This feature allows you to emulate various brushes and pencils. The harder or lighter you press down on the pen tip the stronger or thicker brush strokes, or subtle pencil lines you will receive.

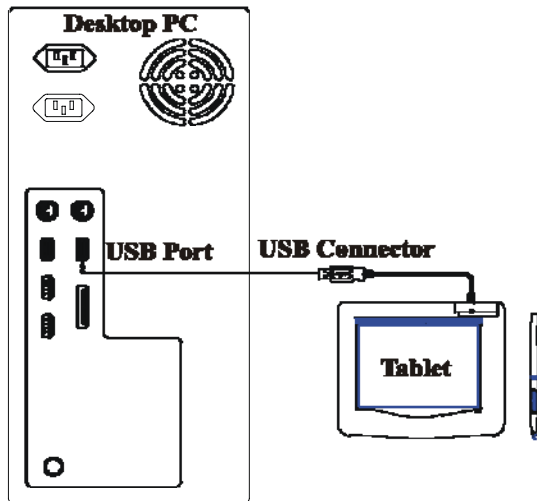
With the aid of third party application programs, your pen tablet opens up even more possibilities:

1. **Graphic design** – Draw with emulated paintbrushes, chalks, watercolors, and a host of other pens and utilities with Corel Painter™ or Adobe Photoshop™.
2. **Signature capturing and authentication** – Seal documents with your own signature with a wide variety of legally binding signature verification programs on the market today.
3. **Handwriting recognition** – Convert handwritten text to ASCII in Microsoft Office XP or later, and the latest Microsoft OneNote™.
4. **Share an Internet whiteboard** – Use MSN messenger™ or Microsoft Netmeeting™ to communicate diagrams and maps, or play impromptu games.
5. **Computer Aided Design (CAD)**.

3. System Requirements

- Pentium III equivalent PC or higher.
- Microsoft Windows 98SE, 2000 or XP.
- At least 256MB of hard disk space for driver and PenSuite installation.
- At least 128MB of RAM (256MB recommended).
- *Pressure sensitivity support*: Microsoft Windows 98SE, 2000 or XP (supported through a Wintab-compatible interface).
- *Annotate for Word*: Microsoft Word in Office 2000 or higher.

4. Hardware Installation



Insert the USB connector into an available USB port on your desktop or notebook PC according to this diagram. After detecting the pen tablet, Windows will attempt to install a device driver for it.

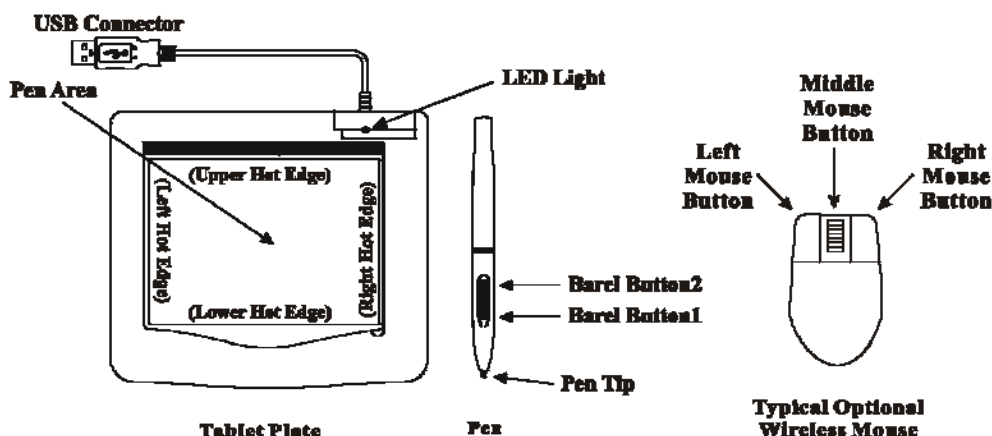
Note: Depending on your Windows version, you may receive an error message after or during the install procedure. In that case, just continue with the installation of the device driver and the PenSuite utilities as described in the next section.

5. Driver & PenSuite™ installation


1. Insert the Driver and PenSuite CD into the CD-ROM drive, and wait for the main menu to appear.
2. On most systems, the pen tablet setup program will start automatically. If not, you can start the setup program manually by selecting [Start] ► [Run], and keying in [E:\setup] (where "E:" represents the CD-ROM drive), and pressing the [Enter] key.
3. Select the [Driver Setup] option and press the [Enter] key on all subsequent questions. The driver will now be installed.
4. Back in the main menu, select [PenSuite Setup], then select the modules you want to install, and click [OK]. The PenSuite software will now be installed.
5. After completing the driver installation and restarting the PC, you will see a small tablet icon (🖊️) appear in the system tray, normally at the lower right corner of the screen. This indicates that the pen tablet is operational. You may now verify its functions as described in the next section.

6. Verifying Hardware and Driver Functions

Follow these steps to ensure that your pen tablet has been installed properly:



The green LED light on the tablet is the main indicator for hardware operation and depending on your pen tablet model may be located at a different place than shown in the above diagram. This LED normally stays off, and will only come on and off in response to various conditions. Watch the state of the LED on the tablet as you go through these test steps:

1. Tap on any surface with the tip of the pen, or press the left button of the mouse, to “wake it up” in case it has gone into standby mode. A built-in power saving precaution may have forced the pen or mouse into standby mode if either of them is not used for some time.
2. As soon as the pen tablet itself activates, the LED will come on briefly, and will then go and stay off again.
3. When the tablet detects the presence of the stylus pen or mouse, the LED will blink slowly. This happens either when pen tip is hovering above the working area of the tablet and within reading distance, or when the mouse is placed on the working area.
4. When you press a button on the pen barrel, or click on a mouse button, the LED will light up.
5. When you touch the pen tip anywhere in the tablet’s working area, the LED will equally light up.
6. *Note:* After the tablet’s device driver has been properly installed, a small tablet icon () will appear in the system tray, normally at the lower right corner of the screen.
7. Hovering or moving the pen or the mouse in the working area will cause the cursor on the screen to move accordingly.

7. Usage Tips

7.1 Pressing left mouse button

If the mouse does not react after you did not use it for a while, press the left button to “wake” it up out of standby mode.

7.2 Tapping before you use the stylus pen

Before you use the pen, or after having not used it for several minutes, tap the pen on any surface to “wake” it up out of standby mode.

7.3 Focusing on the screen

When you write or draw with the pen, try not to look at the tablet, but focus your eyes on the screen instead. After a little practice, you will get more used to this behavior and appreciate the higher efficiency of being able to concentrate on the picture or text you are working on.

7.4 Double tapping

For best results, when you double tap with the pen (equivalent to a double click with a mouse), try to keep the tip of the pen on the tablet surface of, or at least try to lift the pen tip as little as possible before the second tap.

7.5 Storing the pen

To store the pen, make sure that the tip does not touch anything. Especially do not let the pen stand in a cup or penholder with the tip down. A constant, though small, pressure applied to the pen tip will cause a constant drain on the pen’s battery. Place the pen in a penholder specially designed for this purpose, or store it with the pen tip pointing upward, or horizontally with the pen tip free of any pressure by other objects.

7.6 Scrolling and panning with a pen

With the pen you can conveniently browse a document or a Web page. All you need to do is to program, press and hold the lower barrel button (equivalent to a click with the middle button of a three-button mouse), and hover the pen over the working area.

7.7 Using both a pen and an ordinary mouse

You may have both a pen tablet and an ordinary mouse installed on the same computer. You can switch between the two devices at will and, in fact, you can switch between the pen, the tablet mouse, and an ordinary mouse whenever you want.

7.8 Using a pen without an ordinary mouse

You may work with the pen tablet only, without an ordinary mouse at all. When you remove an ordinary mouse, make sure you also completely remove its driver. You remove the mouse driver by selecting [Start] ► [Settings] ► [Control Panel] ► [Device Manager], press the "+" sign to reveal the mouse driver, select and remove it, and restart the computer.

8. Pen Scrolling

Pen scrolling is a special function provided by the pen tablet driver to let you scroll through a document by simply hovering the stylus pen over the tablet without using the scroll bar. Pen scrolling becomes especially convenient for activities such as browsing Web pages on the Internet, examining images larger than the screen, panning a spreadsheet, etc.


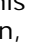
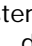
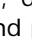

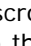


8.1 Enabling pen scrolling

To enable pen scrolling, make sure one of barrel buttons has been set to trigger the mouse command "middle click". This button will now function as the scroll button.

See II. Pen tablet configuration later in this manual for instructions to reprogram the barrel buttons.

8.2 Using pen scrolling

To use pen scrolling, press and hold scroll button while moving the pen over the screen without touching the screen surface. As soon as you press the scroll button, scroll marks such as , , or , will appear, and the cursor will change to a scroll cursor . When you move this scroll cursor away from the scroll mark, the document window will scroll in that direction, and the scroll cursor will point to the direction it is moving, such as  or . To scroll faster, increase the distance between scroll cursor and scroll mark; to scroll at a lower speed, decrease this distance. When you release scroll button, the scroll mark will disappear and pen scrolling will stop.



Press the scroll button and release it immediately to continuously scroll the screen according to the scroll mark's indicated direction. Pressing the scroll button again removes the scroll mark and stops pen scrolling.

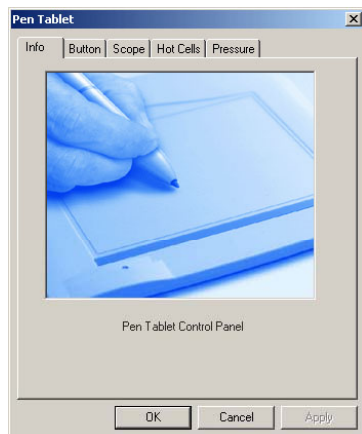
8.3 Variations in the pen scrolling function

Pen scrolling works for most Microsoft applications, including Microsoft's Internet Explorer, Word, Excel, PowerPoint, and Access. Many other applications also support pen scrolling. You will find that the behavior of pen scrolling varies somewhat from application to application, even among Microsoft applications. Some applications will allow you to scroll in all directions, while others will scroll only up and down; some will scroll smoothly, while others tend to be "jumpy".

II. Pen tablet configuration

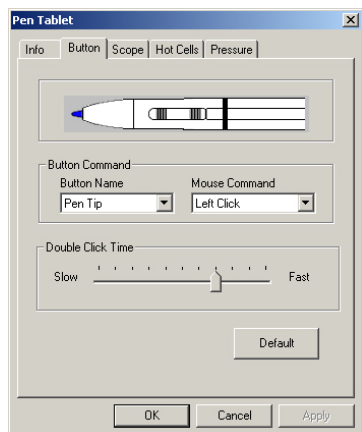
You may configure the pen tablet by modifying the functions of pen tip and the two barrel buttons, adjusting the pressure sensitivity of the stylus pen, determine the scope of the tablet's working area, or (re-) program the hot-cells of your pen tablet.

Tap on the tablet icon () in the *system tray*, usually located at the lower right corner of the screen, to open the pen tablet control panel. Alternatively, tap [Start] > [Settings] > [Control Panel], and double-tap the [Tablet Setting ] icon. The tablet's parameter window will appear on your screen. There are five tabs in this window: **Info**, **Button**, **Scope**, **Hot Cells** and **Pressure**.



9. The Info Tab

The Info tab displays the version number of the driver.



10. The Button Tab

10.1 Button Command

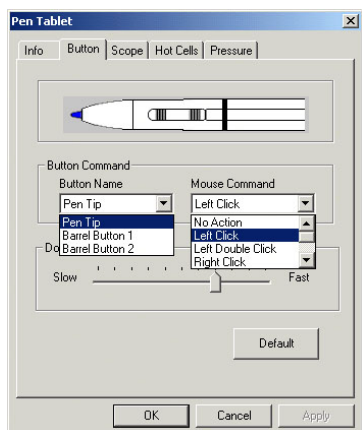
You may reprogram the functions of the pen tip and the two-barrel buttons by selecting the button name from the drop down menu and assigning a command of a traditional three-button mouse to it.

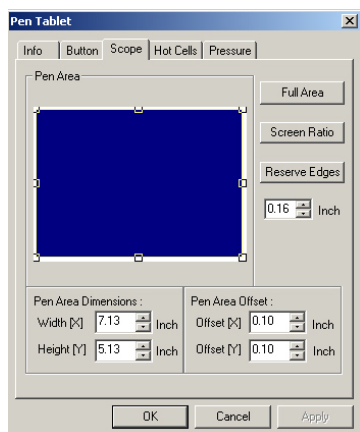
10.2 Double Click Time

Move the Speed Slider toward "Slow" if you wish to allow yourself more time in double tapping with Pen Tip; move the Speed Slider toward "Fast" if you wish the reverse. This setting is the same as Double-click Speed on the page displayed by selecting Start, Settings, Control Panel, Mouse, and Buttons. Changing the speed in one place changes the other at the same time.

10.3 Default

Tap on the Default button to restore all actions to manufacturing default settings.





11. The Scope Tab

11.1 Full Area

Tap on the Full Area button to select the largest possible working area.

11.2 Screen Ratio

Sets Pen Area to be proportional to the screen size by reducing either the current width or height of Pen Area.

11.3 Reserve Edges

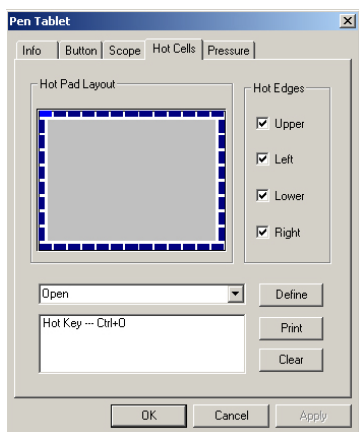
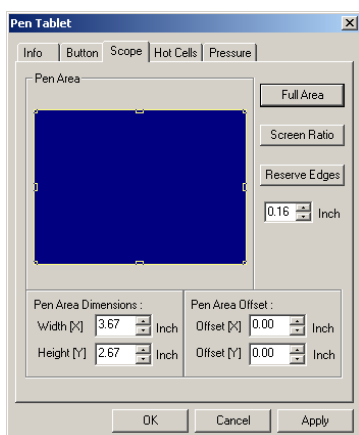
Tap on the Reserve Edges button to allocate space for the tablet's hot cells.

11.4 Pen Area Dimensions

Indicates the current height and width of Pen Area. You may also type in new values here to change them.

11.5 Pen Area Offset

Indicates the horizontal and vertical distances of the upper left corner of Pen Area from the upper left corner of the maximum Pen Area. You may also set their values by typing in the numerical values here.



12. The Hot Cells Tab

12.1 Hot Pad Layout

This area indicates the current size of Pen Area, and each blue rectangle indicates a Hot Cell. You can view and modify the contents of each Hot Cell by first tapping on a rectangle.

12.2 Hot Edges

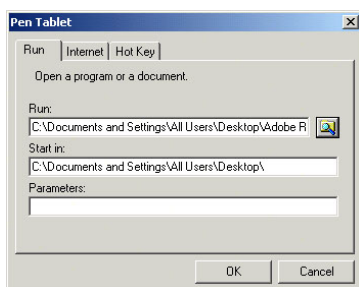
Hot cells are shortcuts at the edges of the working area that you can tap to run a program or a hot key combination e.g. Ctrl-V for Paste. Select the edges of the working area that you wish to contain hot-cells.

12.3 Define

Tap on the Define button to program a hot cell to run a program, go to a specific Website, or perform a hot-key action.

12.3.1 Define Hot Cell - Run

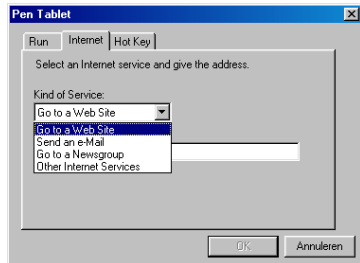
Run – You may use the browse button on the right to select a file to run, or you may type in a file name with complete path. The effect of tapping on Hot Cell will be as if you double tap on the selected file when it is in the Explorer window. That is, for a program, it will be executed, and, for a document, the associated application will be



started. If you select a folder, Explorer will be started with the selected folder in the window.

Start in – This is the initial folder when the program starts execution.

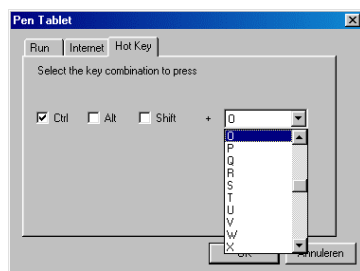
Parameters – The string typed in here will be passed to the program as parameters. For example, you may type in a document name here and pass it to a word processing program specified in the Run line above.



12.3.2 Define Hot Cell - Internet

Kind of Service – You select the kind of Internet service to start. For example, go to a Website, or send an E-mail message. The exact program initiated (for example, which browser program) depends on system settings.

Address – The URL address for the selected service. For example, the Website address, or the e-mail address.



12.3.3 Define Hot Cell - Hot Key

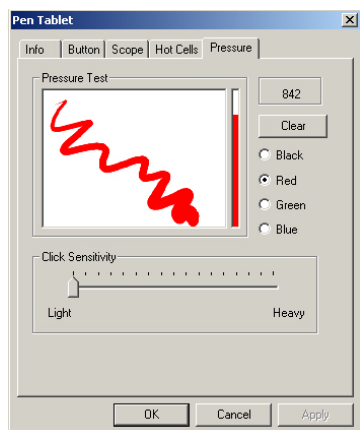
Select the key combination to press – You may select any key such as alphanumeric key or cursor control key, combined with Shift, Ctrl and / or ALT key.

12.4 Print

Tap on the Print button to print an overview of all hot cell functions.

12.5 Clear

Tapping on this button will clear the definition of the selected Hot Cell, so that no action will be taken when the Hot Cell is tapped later.



13. The Pressure Tab

13.1 Pressure Test

The pressure sensitivity of the pen tablet can be adjusted in this tab. There is a test area to see the thickness of a line at a certain pressure of the pen tip on the pad. The numerical value of the pressure level is shown in the field above the Clear button.

13.2 Clear

Tap on the Clear button to clear the result in the Pressure Test area.

13.3 Click Sensitivity

By default, tapping with the pen tip is equivalent to a left click of a mouse. Move the slider in the sensitivity bar to adjust the response of the pen tip to select a program or menu option.

III. Question & Answer




Question 1 : How can I get updated software ?

Answer 1 : You can download the new driver from our website (www.uc-logic.com).

1. Download the latest version of driver by clicking on the link and save it into your hard disk.
2. Uninstall your current tablet driver: Click [Start] ► [All Programs] ► [TABLET] ► [Uninstall].
3. Unzip the file in a folder on your hard disk (with Windows XP's built-in unzip utility or a program like Winzip for instance).
4. Double-click the Setup.exe in the folder where you unzipped the file.

Question 2 : The tablet cannot work. How can I do ?

Answer 2 : Please check if it is okay.

1. Please pull off the tablet's USB plug from the computer.
2. Remove the Tablet driver from the system.
3. Re-connect the Tablet's USB to the computer.
 - (1) Check whether the tablet's LED is blinking or not? If the LED unlighted, that means your tablet is fault.
 - (2) Test your wireless stylus pen on tablet working area, if it can work as a mouse, which means the hardware is OK. If it doesn't work, please change the battery with a new one.
 - (3) After changed a new battery for the pen, if it still not working, that means the hardware is fault.
4. You can free download the latest version of driver directly from our website (www.uc-logic.com)
5. Setup the new version of driver, it will require you to restart your computer.
6. After restart your computer, on bottom right of the screen, you can find the tablet icon () within there.
 - (1) If you can't find the tablet icon() on the bottom right of the screen, it means the driver fail in startup, It might cause by a incompatible issue.
 - (2) Check from [My Computer] ► [Properties] ► [Hardware] ► [Device Manager], if there is an exclamation mark occurs, it means the installed driver of tablet is incompatible with the windows system. If you have this problem, please contact us for more service. (service@uc-logic.com)
7. By clicking the tablet icon () on the bottom right of the screen, you can test the pressure sensitivity to see whether the pen pressure function works or not. (Please refer chapters 13 for more detail).
 - (1) If can't induction the pen pressure, it means the pen hardware is fault.