



AT&T + T-Mobile

Fast, efficient, certain solution to impending wireless spectrum exhaust



Added scale, spectrum and resources



Delivers:

- **Expanded 4G LTE to 95% of Americans** or 294 million people
 - 46.5 million more people (the combined populations of New York and Texas) will have access to AT&T's LTE service
 - 1.2M more square miles of the country will be covered with AT&T LTE
 - Equivalent to 4.5x the size of Texas
 - Includes rural areas and small communities
 - **Improved voice and data network performance** across the U.S., particularly in markets challenged by impending spectrum exhaust
 - **Access for 34 million T-Mobile customers** to nationwide, robust 4G LTE
 - T-Mobile USA does not have a clear path to delivering 4G LTE
 - **Support for innovative wirelessly-enabled** devices, applications and content developed by others
 - **Billions invested in rural America**
 - Improving economic competitiveness
 - Stimulating additional investment and job creation
- **4G LTE to 95% of U.S. population helps achieve U.S. Policymakers' goals**

“Within the next **five** years, we'll make it possible for businesses to deploy the next generation of high-speed wireless coverage to **98%** of all Americans. This isn't about faster Internet or fewer dropped calls, it's about **connecting every part of America to the digital age.**”

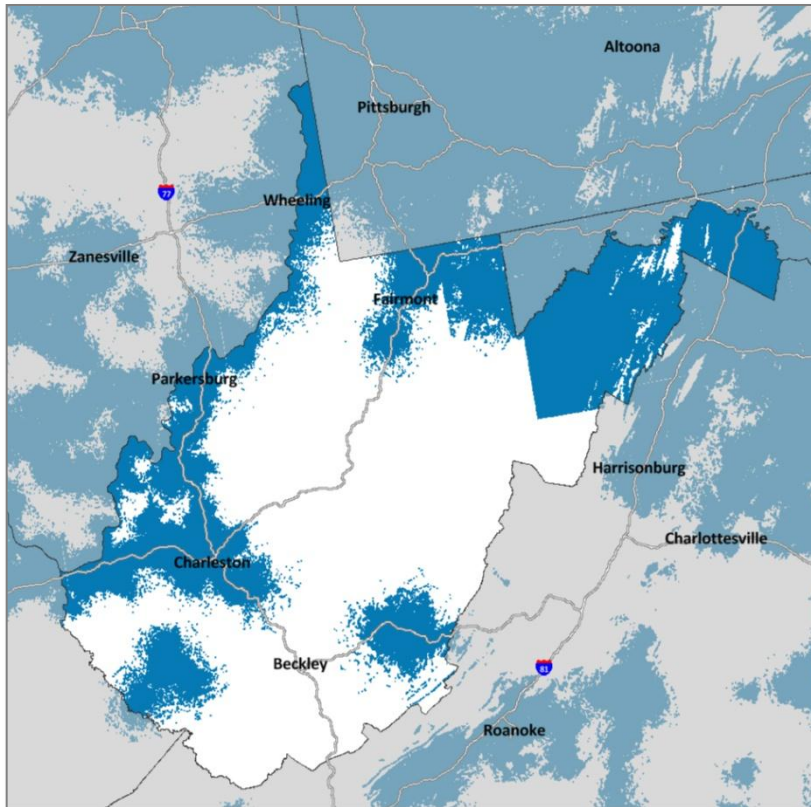
– **President Barack Obama, State of the Union, 25 January 2011**

With T-Mobile: AT&T commits to expanding LTE to 95% of U.S. population

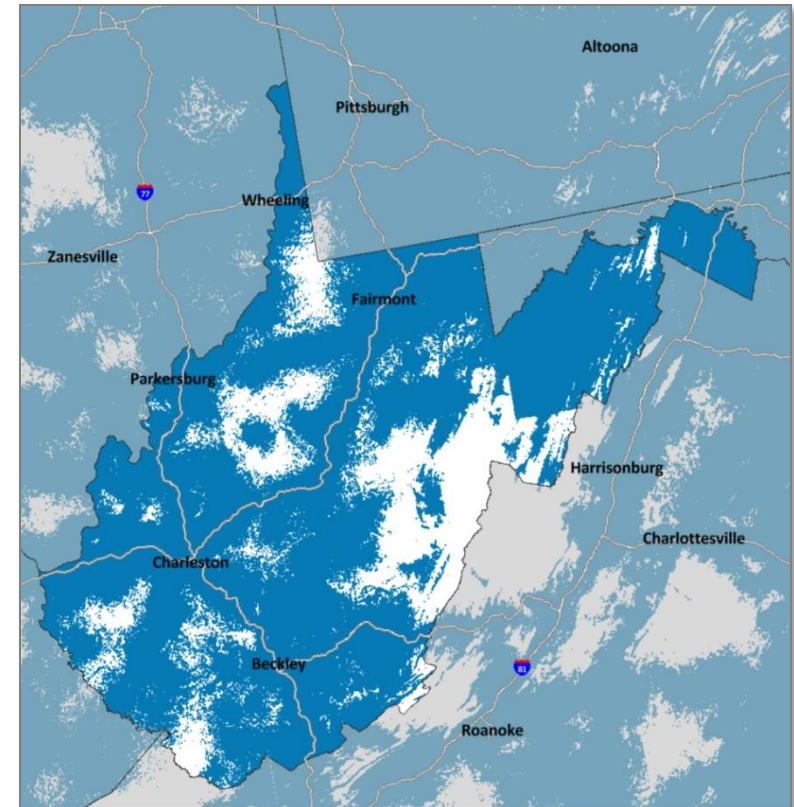


For example: AT&T 4G LTE Deployment in West Virginia

Current Plan



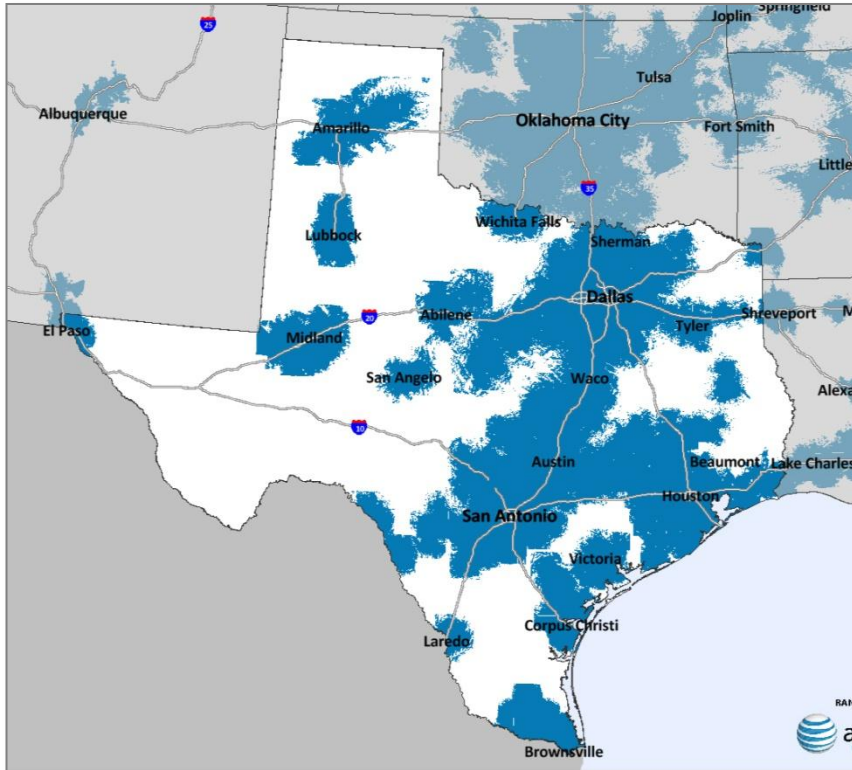
With Merger



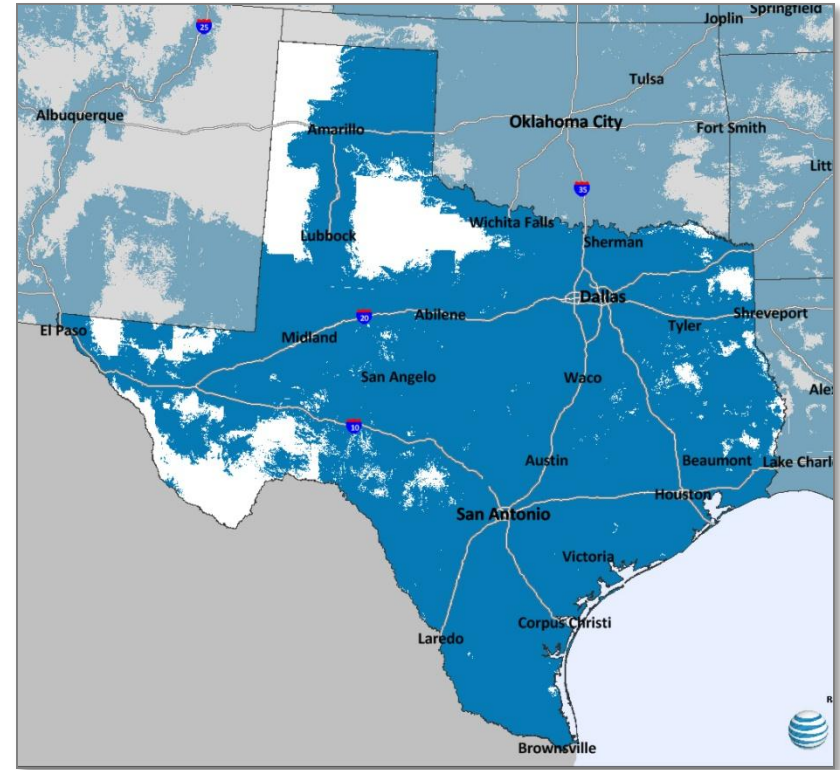
For example: AT&T 4G LTE Deployment in Texas



Current Plan



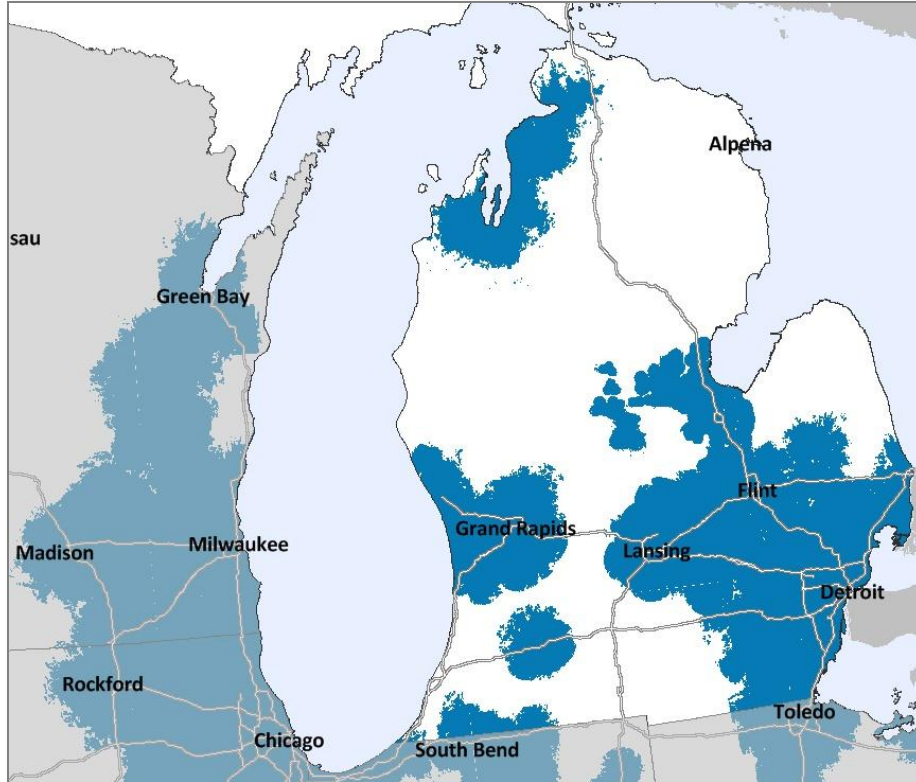
With Merger



For example: AT&T 4G LTE Deployment in Michigan



Current Plan



With Merger

